

GO-GO

ELITE TRAVELLER® PLUS AND ELITE TRAVELLER® PLUS HD



Go-Go Elite Traveller® Plus, 3-wheel

The Go-Go Elite Traveller® Plus was designed to bring travel scooters to a greater range of people than ever before. An increase in length and width, and a weight capacity of 300 lbs. (325 lbs. w/HD version) combine with wraparound delta tiller to allow both the larger individual and those with limited dexterity to experience the benefits of a travel specific mobility product for the first time. One hand Feather-touch disassembly makes the Go-Go Elite Traveller Plus the easiest travel scooter to take along anywhere.



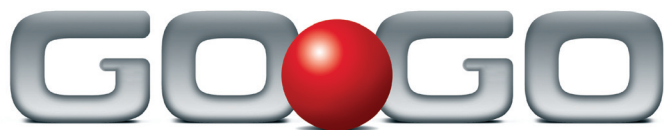
*Go-Go Elite Traveller® Plus,
4-wheel*

Available as a 3 & 4 wheel scooter



Feather-touch disassembly.

Pride[®]
Mobility Products Corp.

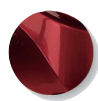


ELITE TRAVELLER® PLUS
AND

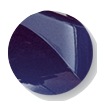
ELITE TRAVELLER® PLUS HD

Max. weight capacity	300 lbs./325 lbs. w/HD version	
Maximum speed ¹	Up to 4.5 mph	
Ground clearance ²	3"	
Turning radius ²	3-wheel: 34"	4-wheel: 45.75"
Overall length ²	3-wheel: 40"	4-wheel: 40.25"
Overall width ²	3-wheel: 21.125" 4-wheel: 21.125"	
Tires		
Front	3-wheel: 2" x 8" solid	
	4-wheel: 2" x 8" solid	
Rear	3-wheel: 3" x 9" solid	
	4-wheel: 3" x 9" solid	
Anti-tips	Rear	
Standard seating	Compact, foldable, black vinyl	
Suspension	NA	
Battery charger	Off-board, 2 amp	
Per-charge range ^{1,5}	Up to 12 miles	
Battery requirements ³	(2) 12V deep-cycle	
Compatible batteries	17AH	
Weight		
Battery weight ⁴	17AH battery pack: 29 lbs.	
Weight w/o battery pack	3-wheel: 84 lbs.	4-wheel: 87 lbs.
Heaviest piece	3-wheel: 30 lbs. (rear section)	
	4-wheel: 35 lbs. (front section)	

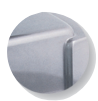
Standard Colors



Red



Blue



Silver

3 sets of exciting colors with every scooter!



Delta tiller with wrap-around handles

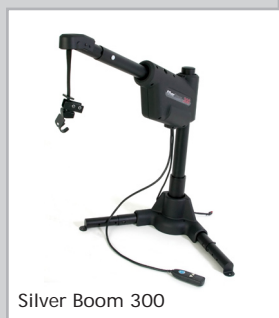
Features

- Feather-touch disassembly with one hand
- Delta tiller with wraparound handles
- Pride's exclusive black non-scuffing tires
- Standard 17AH battery pack
- 9" rear wheels
- 325 lbs. weight capacity w/HD version
- Auto-connecting front to rear cable
- Includes 3 sets of easily changeable colored panels - Red, Blue and Silver
- Front frame-mounted seat post offers maximum stability
- All new frame design easily disassembles into 5 super lightweight pieces for convenient transport and storage
- Modular design for easy serviceability
- Microprocessor-based controller offers optimal power management and added safety features
- Front tiller-mounted basket
- Removable footboard basket for additional storage (4-wheel version only)
- Convenient off-board dual voltage charger can charge battery pack on-board or off-board

Silver Star® Lifts & Ramps 

These Silver Star® Lifts are compatible with the Go-Go Elite Traveller® Plus.

- Backpacker® MV
- Full Platform



Silver Boom 300



Backpacker® Plus

(US) 800-800-8586 • (Canada) 888-570-1113 • www.pridemobility.com

¹Varies with user weight, terrain type, battery amp-hour (AH), battery charge, battery condition and tire condition. This specification can be subject to a variance of (+ or -) 10%.

²Due to manufacturing tolerances and continued product improvement, this specification is subject to a variance of +/- 3%.

³AGM or gel cell type recommended.

⁴Battery weight may vary based on manufacturer.

⁵Tested in accordance with ANSI/RENSA, WC Vol 2, Section 4, and ISO 7176-4 standards. Results derived from theoretical calculations based on battery specifications and drive system performance. Test conducted at maximum weight capacity.

The information contained herein is correct at the time of publication. We reserve the right to alter specifications without prior notice.

